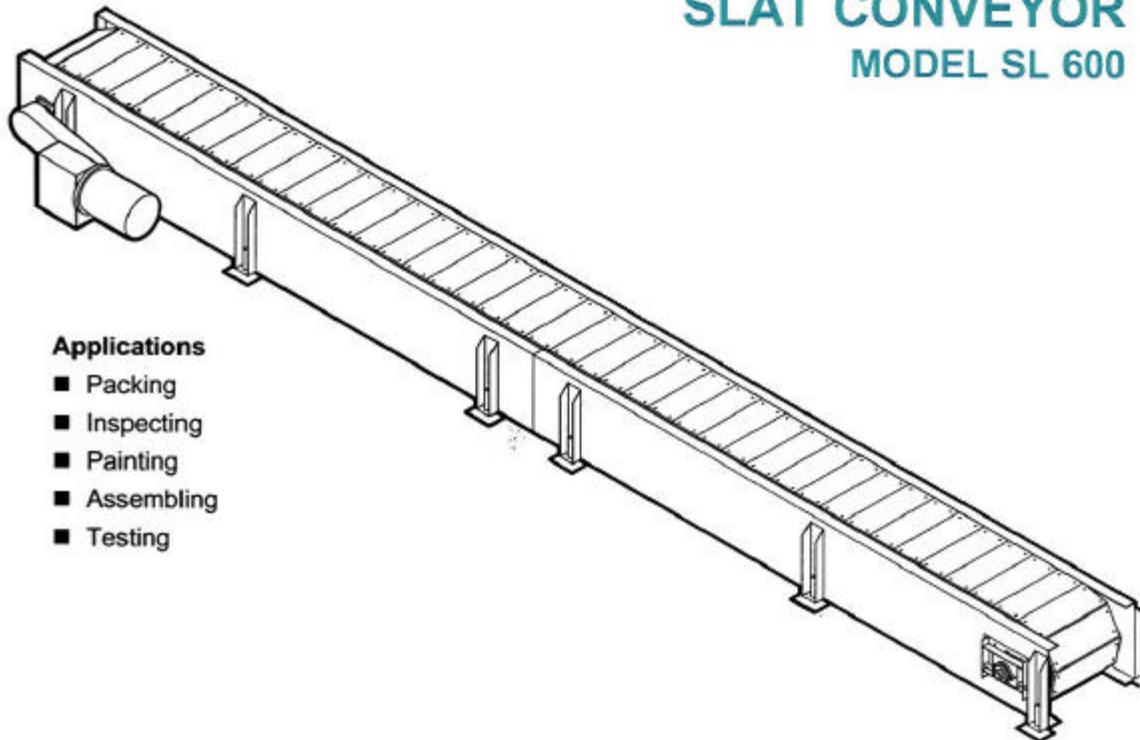


SLAT CONVEYOR MODEL SL 600



Applications

- Packing
- Inspecting
- Painting
- Assembling
- Testing

Standard Specifications:

Slats - 5 3/4 in. x 10 ga. formed slat standard, bolted to A-2 attachments on chain. Slat length is effective conveying surface.

Chain & Slat Return - Returns on angle track, supplied as part of conveyor framework.

Chain - Heavy Duty 6 in. pitch with A-2 attachments on each pitch.

Driving Sprockets - 6 in. tooth SR 196 12 in. pitch dia.

Conveyor Frame - 7 ga. formed channel construction, heavily cross braced. Maximum section length 10 feet. 3 1/2 in. high solid guard rails both sides.

Drive - Floor mounted at discharge end of conveyor.

Drive Shaft - 2 3/16 in. dia. CRS.

Tail Shaft - 1 15/16 in. dia. CRS

Drive - Floor mounted at discharge end of conveyor.

Take-Up - Mounted at tail end of conveyor for adjustment of chain tension.

Motor - 3/4 H.P. 230/460/3/60 TEFC motor.

Reducer - Heavy duty worm gear reducer.

Speed - 20 FPM constant.

Capacity - 400 lbs. per foot maximum. Not to exceed Load Capacity Chart.

Tough, Gentle, Clean

Gough Econ, Inc.

P.O. Box 668583, Charlotte, NC 28266-8583

Phone: 800.264-6844 Fax: 704.392.8706

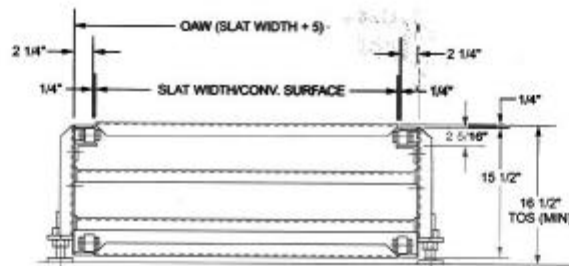
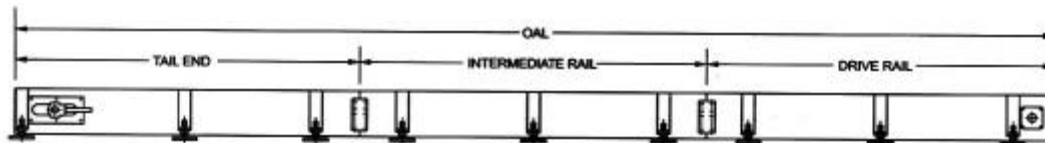
E-Mail: sales@goughecon.com

Website: www.goughecon.com

Form: slatconveyor.doc

Conveyor Length	Slat Width				
	24"	30"	36"	42"	48"
5'	2225	2471		2963	3209
10'	3821	4313		5297	5789
15'	5417	6155	6893	7631	8369
20'	7013	7997	8981	9965	10949
25'	8582	9812	11042	12272	13502
30'	10178	11654	13130	14606	16082
35'	11774	13496	15218	16940	18662
40'	13370	15338	17306	19274	21242
45'	14966	17180	19394	21608	23822
50'	16562	19022	21482	23942	26402

LOAD CAPACITY CHART		
Total Live Load @ 20 FPM		
HP	Up to 40 ft.	Up to 100 ft.
3/4	1700 lbs.	--
1	3500 lbs.	--
1 1/2	7000 lbs.	1700 lbs.
2	11,000 lbs.	5400 lbs.
3	16,000 lbs.	10,000 lbs.



Optional Equipment:

- Slats - Heavier gauge and hardwood slats available.
- Dwell Station - Gravity section mounted level with slat surface. Allows product to be inspected, tested, etc., while conveyor remains running.
- Chain - 4 in. pitch heavier duty chain available, inquire.
- Motor - Totally enclosed, explosion proof and others.
- Speed - Other constant speed and variable speed available.
- Electrical Controls - Magnetic starter push button stations, manual one direction.

Tough, Gentle, Clean

Gough Econ, Inc.
P.O. Box 668583, Charlotte, NC 28266-8583
Phone: 800.264-6844 Fax: 704.392.8706
E-Mail: sales@goughecon.com
Website: www.goughecon.com
Form: slatconveyor.doc