

## Applications:

- Cereal
- Coffee/Tea
- Confectionery
- Pasta
- Pet Foods
- Salt/Spices
- Snack Foods/Nuts
- Ammunition
- Batteries
- Carbon Black
- Catalyst
- Chemical
- Fertilizer
- Glass Cullet
- Metal Powders

## Features & Benefits:

### Construction

- Robust unit construction for durability and easy installation.
- Multiple discharge and inlet feeds for customer flexibility.
- Multiple cover options to meet specific application needs and insure safety.

### Bucket Design

- Buckets remain upright throughout circuit to insure product integrity.
- Clean-in-place capabilities for maximum cleanliness
- Smooth bucket surfaces eliminate product trap areas.
- Various materials of construction for buckets are available.

### Patented Chain Design

- Heavy-duty chains for increased throughputs for increased production rates.
- Various materials of construction for chains to meet specific process applications and insure long-life durability and reliability.
- Wash-through chain design for maximum cleanliness and superior sanitation.

### Sales & Service Support

- Gough Econ offers a variety of equipment to meet all your material handling needs.
- A skilled engineering and sales support staff will insure customer satisfaction with strong technical expertise.
- A strong service organization offers unsurpassed post sales support and economical spare parts.



***Tough, Gentle, Clean***

### Gough Econ, Inc.

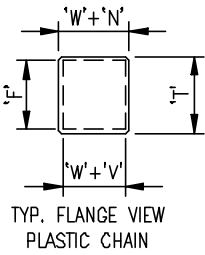
P.O. Box 668583, Charlotte, NC 28266-8583  
 Phone: 800.264-6844 Fax: 704.392.8706  
 E-Mail: [sales@goughecon.com](mailto:sales@goughecon.com)  
 Website: [www.goughecon.com](http://www.goughecon.com)  
 Form: EconOLift .doc Rev 1



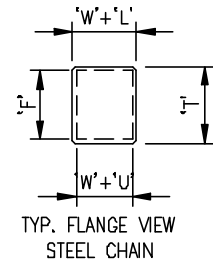
# GOUGH ECON, INC.

BULK MATERIAL HANDLING SOLUTIONS

## Econ-O-Lift Bucket Elevators

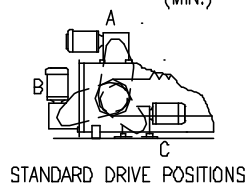
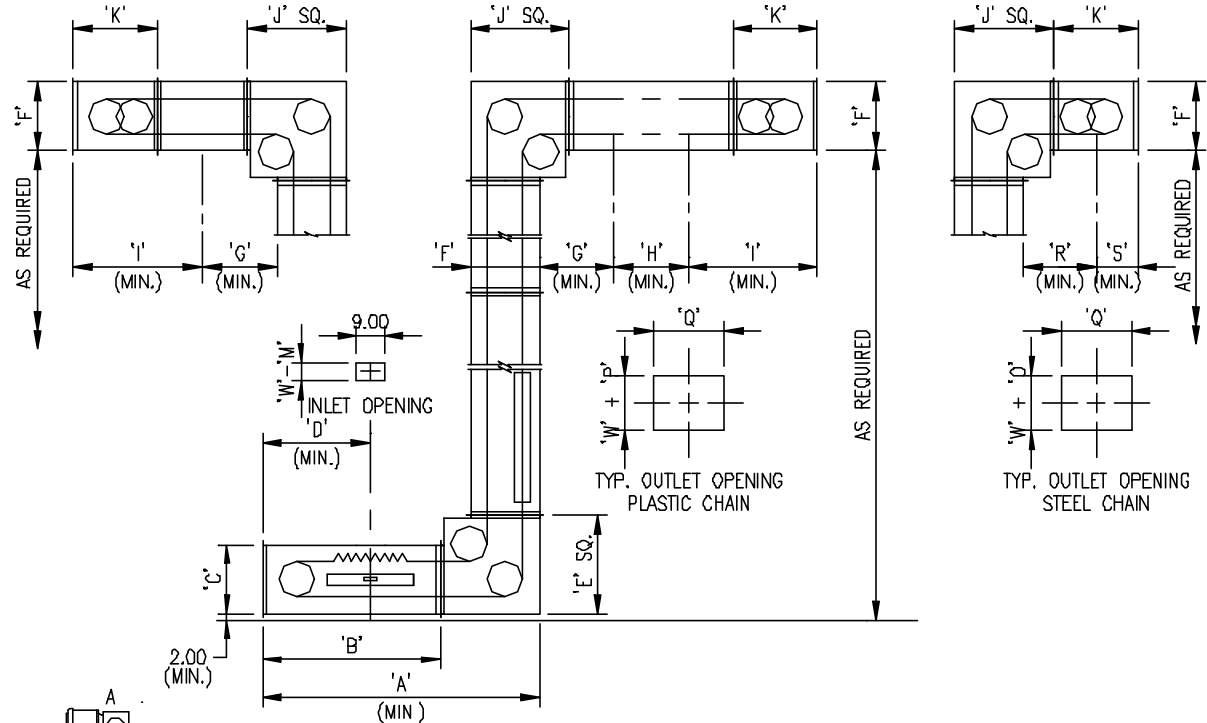


PLASTIC			STEEL		
WIDTH ('W')	CAPACITY CU. IN.	RATE CFH	WIDTH ('W')	CAPACITY CU. IN.	RATE CFH
9"	222	185	9"	250	208
18"	437	364	12"	330	275
24"	580	482	18"	500	417
			24"	660	550
			30"	830	692



'C-SHAPE' SINGLE TIPPING CONFIGURATION

'Z-SHAPE' END TIPPING CONFIGURATION



'Z-SHAPE' MULTIPLE TIPPING CONFIGURATION

'A'	'B'	'C'	'D'	'E'	'F'	'G'	'H'	'I'	'J'	'K'	'L'	'M'
89.38	57.38	22.25	34.75	32.00	22.25	24.50	24.00	41.75	32.00	27.25	12.25	3.00
'N'	'O'	'P'	'Q'	'R'	'S'	'T'	'U'	'V'				
11.25	7.00	9.00	22.00	23.38	13.63	24.75	9.25	14.25				

DIMENSIONS GIVEN IN INCHES

**Tough, Gentle, Clean**

**Gough Econ, Inc.**  
P.O. Box 668583, Charlotte, NC 28266-8583  
Phone: 800.264-6844 Fax: 704.392.8706  
E-Mail: [sales@goughecon.com](mailto:sales@goughecon.com)  
Website: [www.goughecon.com](http://www.goughecon.com)  
Form: EconOLift .doc Rev 1