

## Applications

- Catalyst
  - Chemicals
  - Fertilizer
  - Glass Cullet
- Fiberglass
  - Sand
  - Salt
  - Metal Powders
- Ammunition
  - Batteries
  - Carbon Black

## Features & Benefits

### Construction

- Robust unit construction for durability and easy installation
- Multiple discharge and inlet feeds for customer flexibility
- Multiple cover options to meet specific application needs and ensure safety

### Bucket Design

- Buckets remain upright throughout circuit to ensure product integrity
- Smooth bucket surfaces eliminate product trap areas
- Various construction materials for buckets are available to meet specific process requirements

### Patented Chain Design

- Heavy-duty chains for increased throughputs for increased production rates
- Various construction materials for chains to meet specific process applications and ensure long-life durability and reliability

### Sales & Service Support

- Gough Econ offers a variety of equipment to meet all your material handling needs
- An engineering and sales support staff with strong technical expertise ensures customer satisfaction
- A strong service organization offers unsurpassed post sales support and economical spare parts



***Tough, Gentle, Clean***

### Gough Econ, Inc.

P.O. Box 668583, Charlotte, NC 28266-8583  
 Phone: 800.264-6844 Fax: 704.392.8706  
 E-Mail: [sales@goughecon.com](mailto:sales@goughecon.com)  
 Website: [www.goughecon.com](http://www.goughecon.com)  
 Form: EconOLift/Ind .doc

Rev 1



## Econ-O-Lift Industrial Bucket Elevators

### Typical Engineering Data

#### Construction:

Tubular, open, folded construction, or totally enclosed designs available

*Construction Materials:* 11-gauge folded steel side panels, with 14-gauge steel, stainless steel or lexan cover panels

All elevators are covered up to 7'-0" for safety purposes

#### Bucket Design:

From 6" wide to 48" wide on 9" pitch

*Construction Materials:* Carbon steel, stainless steel or polypropylene as required.

*Tipping mechanism:* Tipping sprockets allow 360° rotation

#### Chain Design:

3" pitch

*Construction Materials:* Carbon steel, acetal plastic, or stainless steel

#### Sprocket & Shaft Design:

Easily removed sprockets made from steel (for steel chains) or a polymeric compound (for plastic chains).

#### Sprocket/shaft bearing:

Sealed flange bearing

#### Lubrication:

Lubrication required on CS & SS chains (Lubrication used depends on application)  
No lubrication required on plastic chain

#### Temperature:

-22 °F (-30 °C) up to 230 °F (110 °C)  
120 °F highest recommended temperature for plastic buckets  
Mild or stainless steel allows higher temperatures

#### Finish:

Steel It™ air dry polyurethane

#### In-Feed Options:

Controlled in-feed recommended

#### Discharge Options:

"Over the end" discharge.  
Single or multiple discharge(s) anywhere in the circuit

#### Drives:

Drive HP, voltage, etc. dependant on application. Motor drives into a gearbox, which is then transferred via transmission chain and sprockets. A torque limiter provides protection to elevator main chains and components.

**Tough, Gentle, Clean**

### Gough Econ, Inc.

P.O. Box 668583, Charlotte, NC 28266-8583

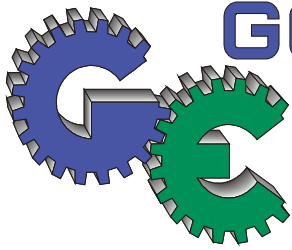
Phone: 800.264-6844 Fax: 704.392.8706

E-Mail: [sales@goughecon.com](mailto:sales@goughecon.com)

Website: [www.goughecon.com](http://www.goughecon.com)

Form: EconOLift/Ind .doc

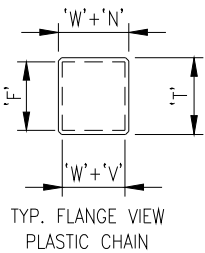
Rev 1



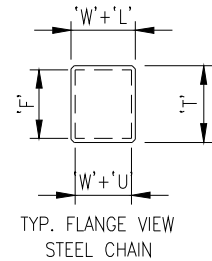
# GOUGH ECON, INC.

BULK MATERIAL HANDLING SOLUTIONS

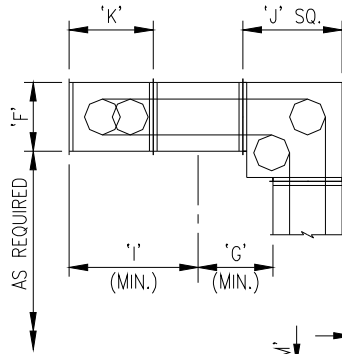
## Econ-O-Lift Industrial Bucket Elevators



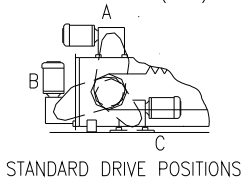
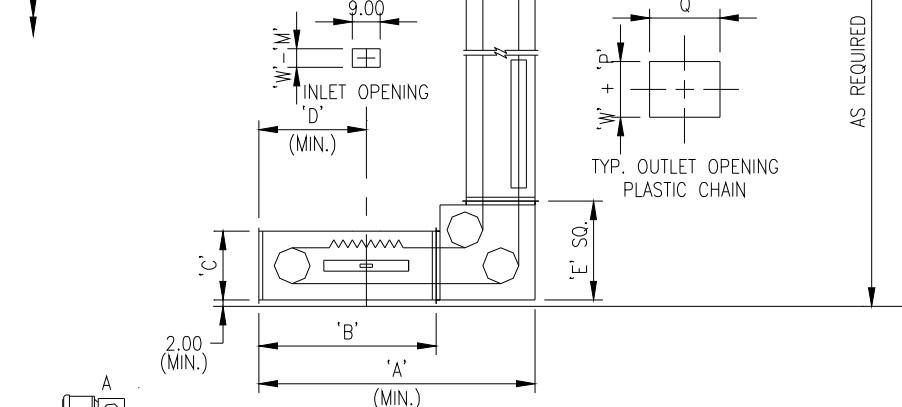
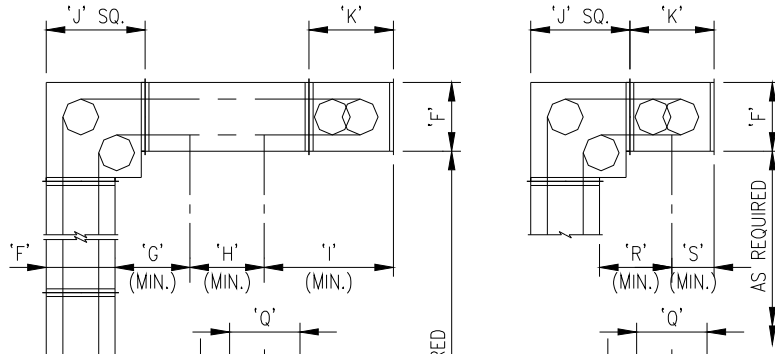
PLASTIC			STEEL		
WIDTH ('W')	CAPACITY CU. IN.	RATE CFH	WIDTH ('W')	CAPACITY CU. IN.	RATE CFH
9"	222	185	9"	250	208
18"	437	364	12"	330	275
24"	580	482	18"	500	417
			24"	660	550
			30"	830	692



### 'C-SHAPE' SINGLE TIPPING CONFIGURATION



### 'Z-SHAPE' END TIPPING CONFIGURATION



### 'Z-SHAPE' MULTIPLE TIPPING CONFIGURATION

'A'	'B'	'C'	'D'	'E'	'F'	'G'	'H'	'I'	'J'	'K'	'L'	'M'
89.38	57.38	22.25	34.75	32.00	22.25	24.50	24.00	41.75	32.00	27.25	12.25	3.00
'N'	'O'	'P'	'Q'	'R'	'S'	'T'	'U'	'V'				
11.25	7.00	9.00	22.00	23.38	13.63	24.75	9.25	14.25				

DIMENSIONS GIVEN IN INCHES

**Tough, Gentle, Clean**

### Gough Econ, Inc.

P.O. Box 668583, Charlotte, NC 28266-8583

Phone: 800.264-6844 Fax: 704.392.8706

E-Mail: [sales@goughecon.com](mailto:sales@goughecon.com)

Website: [www.goughecon.com](http://www.goughecon.com)

Form: EconOLift/Ind .doc

Rev 1