

Features & Benefits:

Designed for Reliability

The Gough Econ range of electromagnetic vibrating feeders is solidly constructed and requires minimal preventative maintenance. This proven equipment has forged a reliable reputation throughout a variety of industrial and food applications.



Designed for Cleanliness

Trays are available in a mild or stainless steel. With a simple, clean line design, dirt pockets and crevices are virtually eliminated. This highly sanitary unit is optimum in industries, such as food, to convey product to packaging machines, weigh scales, and bucket elevators.



Designed to be User-Friendly

With few moving parts, maintenance is kept to an absolute minimum. Feeder tuning adjustments are quick and simple and not typically required once the feeder has left our manufacturing facility.



Design Flexibility

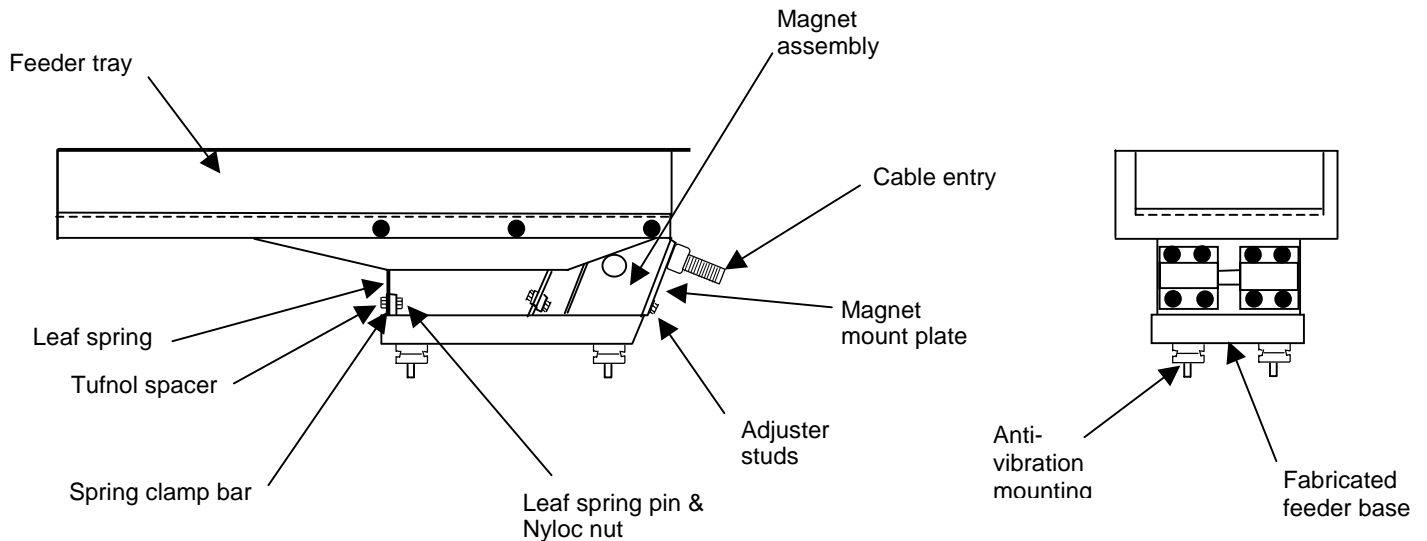
The Gough Econ feeders are available with carbon steel or stainless steel pans. The pans can be customized to suit your application. In some applications feeder pans are designed to screen a product as it is conveyed along the pans length. The stainless steel feeder pans are manufactured to several levels of sanitation dependent upon your application needs.

Tough, Gentle, Clean

Gough Econ, Inc.

P.O. Box 668583, Charlotte, NC 28266-8583
 Phone: 800.264-6844 Fax: 704.392.8706
 E-Mail: sales@goughecon.com
 Website: www.goughecon.com
 Form: feeders.doc

Technical Data:



Specifications	GF Series
Model	GF
Power Supply	110V, 60 Cycles, Single Phase
Nominal Full Load Power Input – 110 V	10 Amps
Nominal Capacity (See Notes)	#/Hr
Dimensional Range	L x W (in)
Width:	
Length:	
Weight (max):	lbs
Accessories	
Stainless Steel/carbon steel tray	
Mobile or static unit	
Integral feed/storage hopper	
Controller	

Notes: 1.) Capacities are based upon the flow of dry sand weighing 100 lbs/ft³ and assume a flow rate of 30 FPM.
2.) Tray depth is assumed at 66%.

Tough, Gentle, Clean

Gough Econ, Inc.
P.O. Box 668583, Charlotte, NC 28266-8583
Phone: 800.264-6844 Fax: 704.392.8706
E-Mail: sales@goughecon.com
Website: www.goughecon.com
Form: feeders.doc